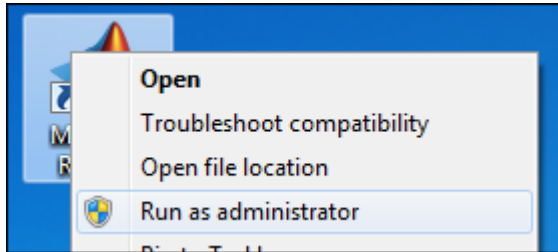


# Renew Matlab license.

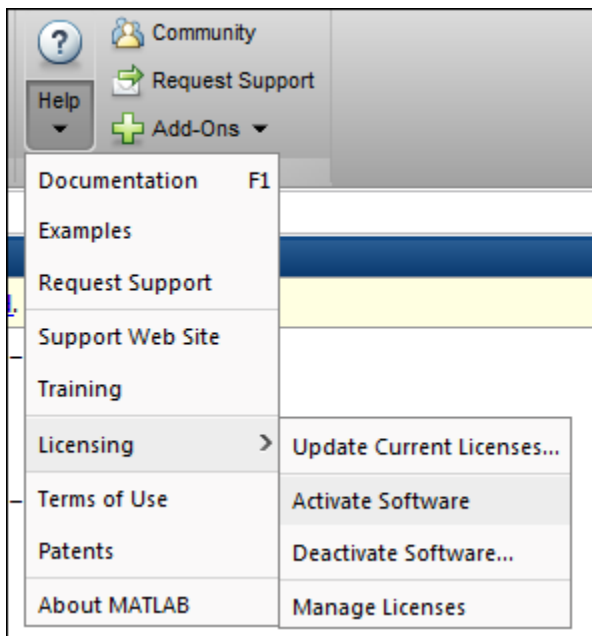
---

Follow these steps to update your Matlab license:

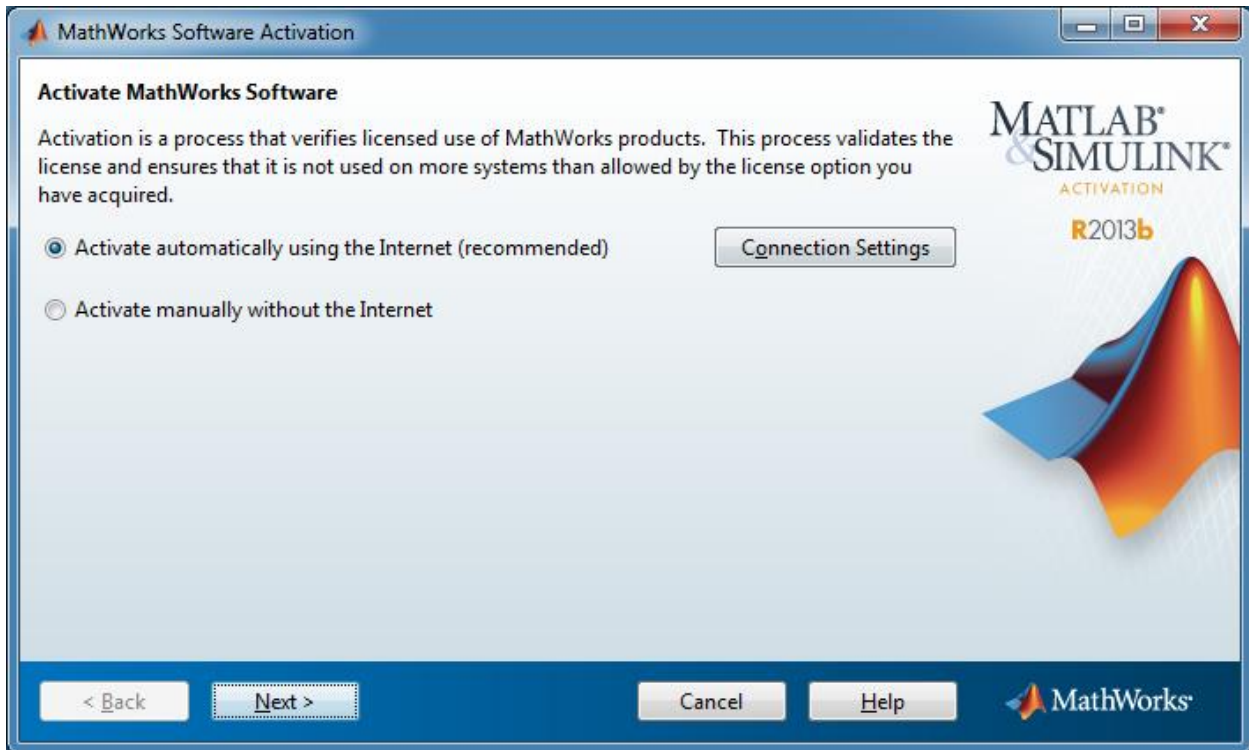
Run Matlab as Administrator:



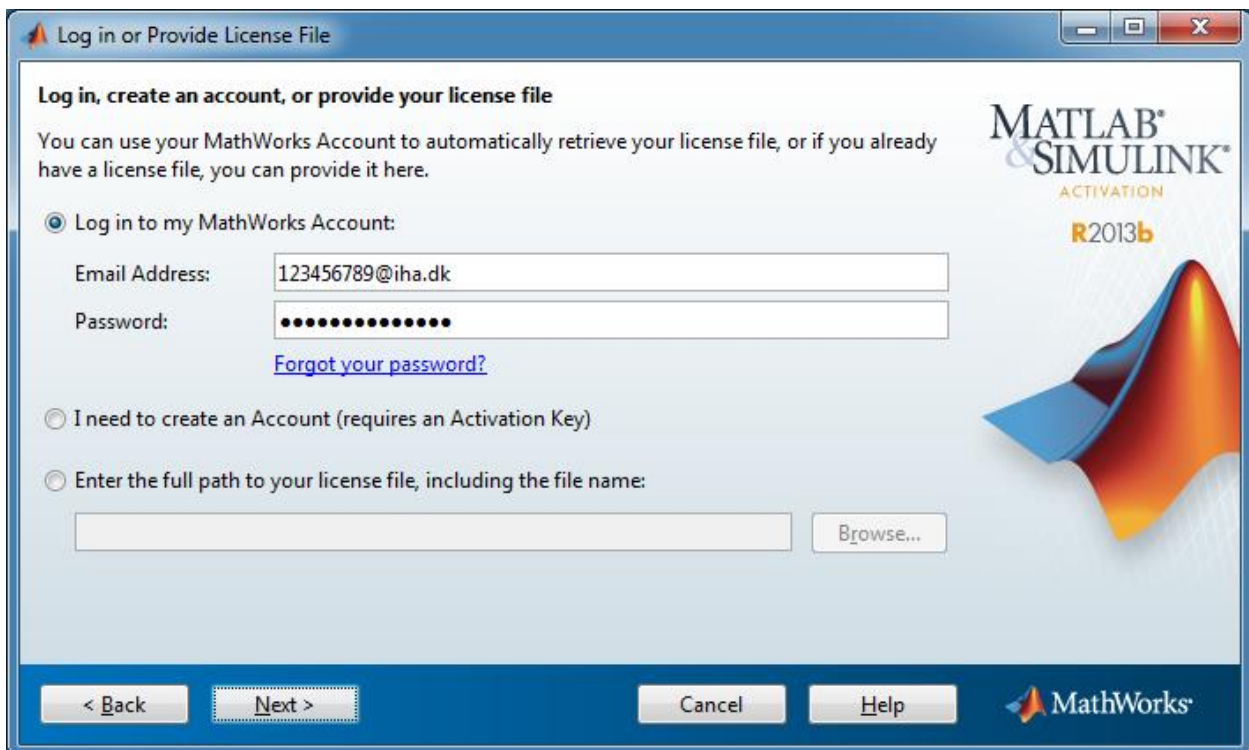
Expand the Help menu and select Licensing -> Activate Software



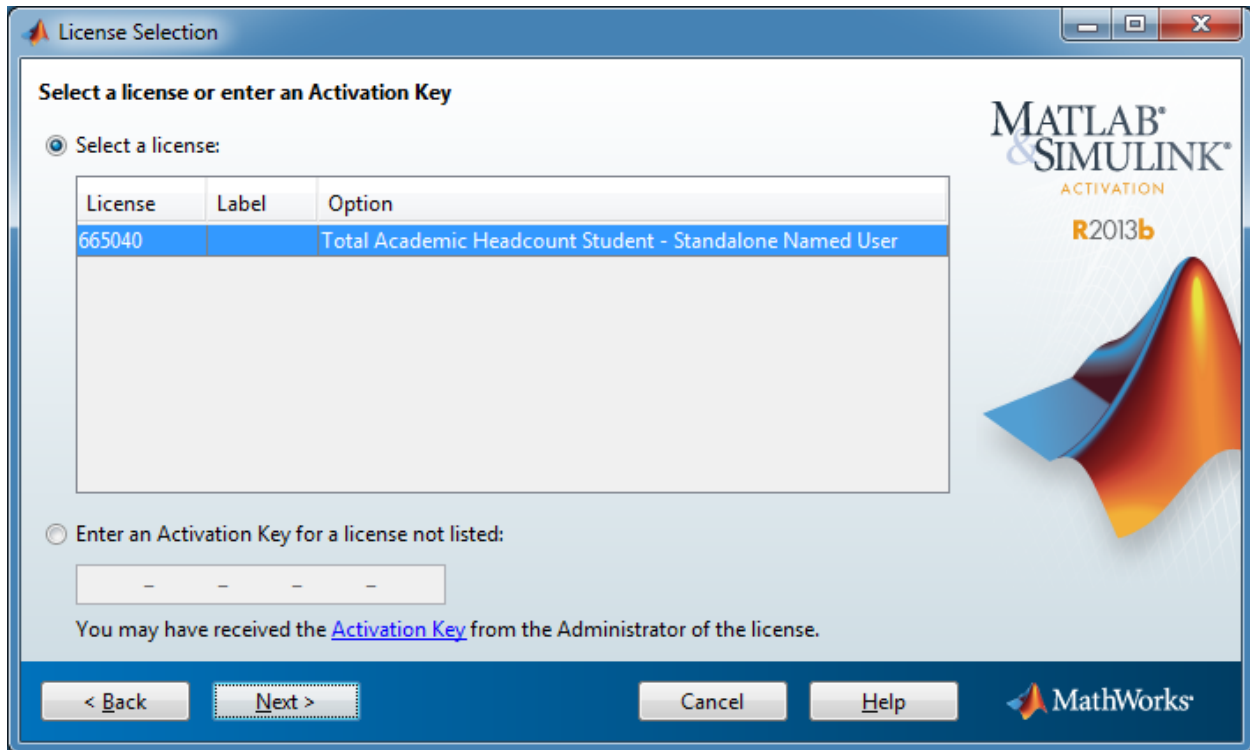
Click Next:



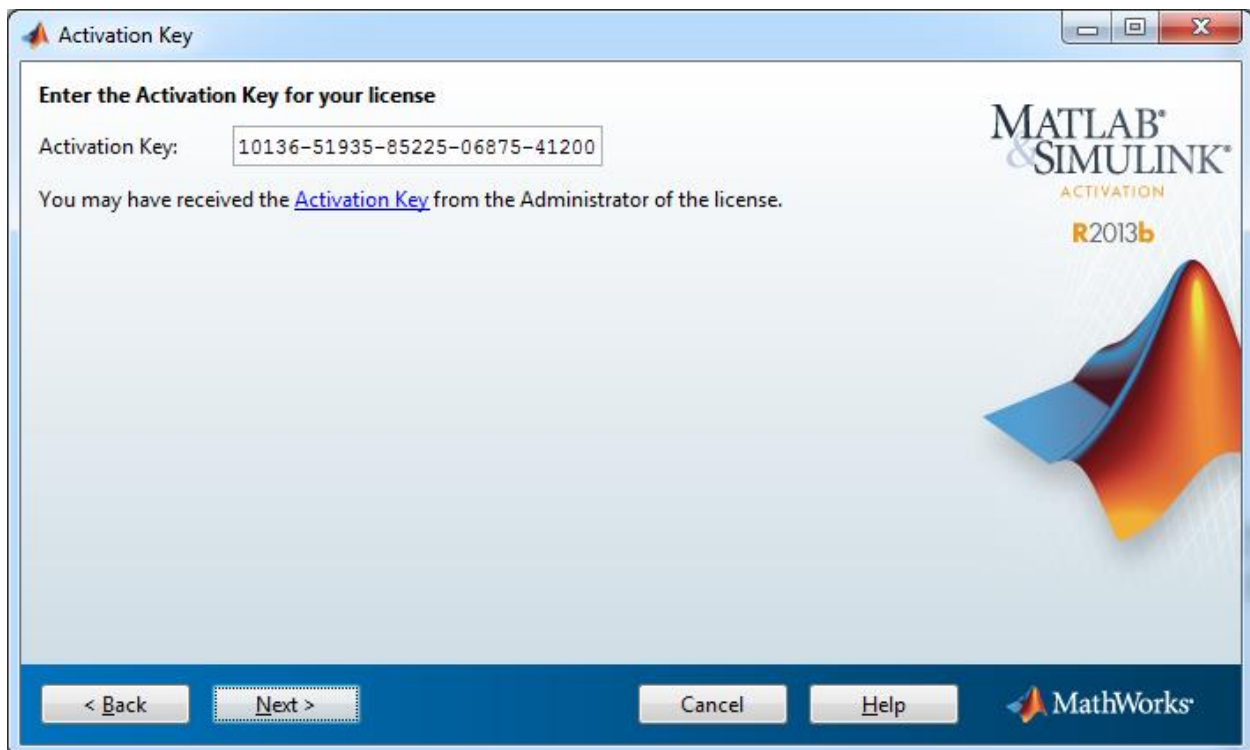
Type your MathWorks log in information and click Next:



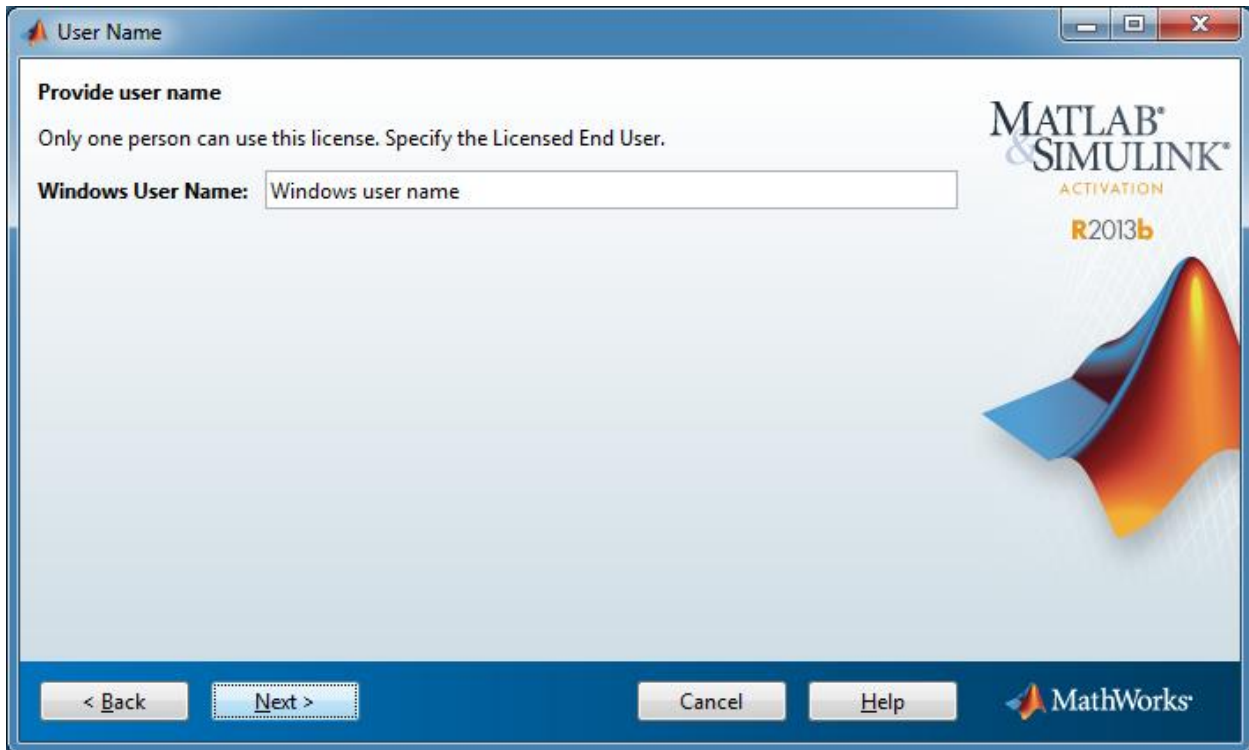
Click Next:



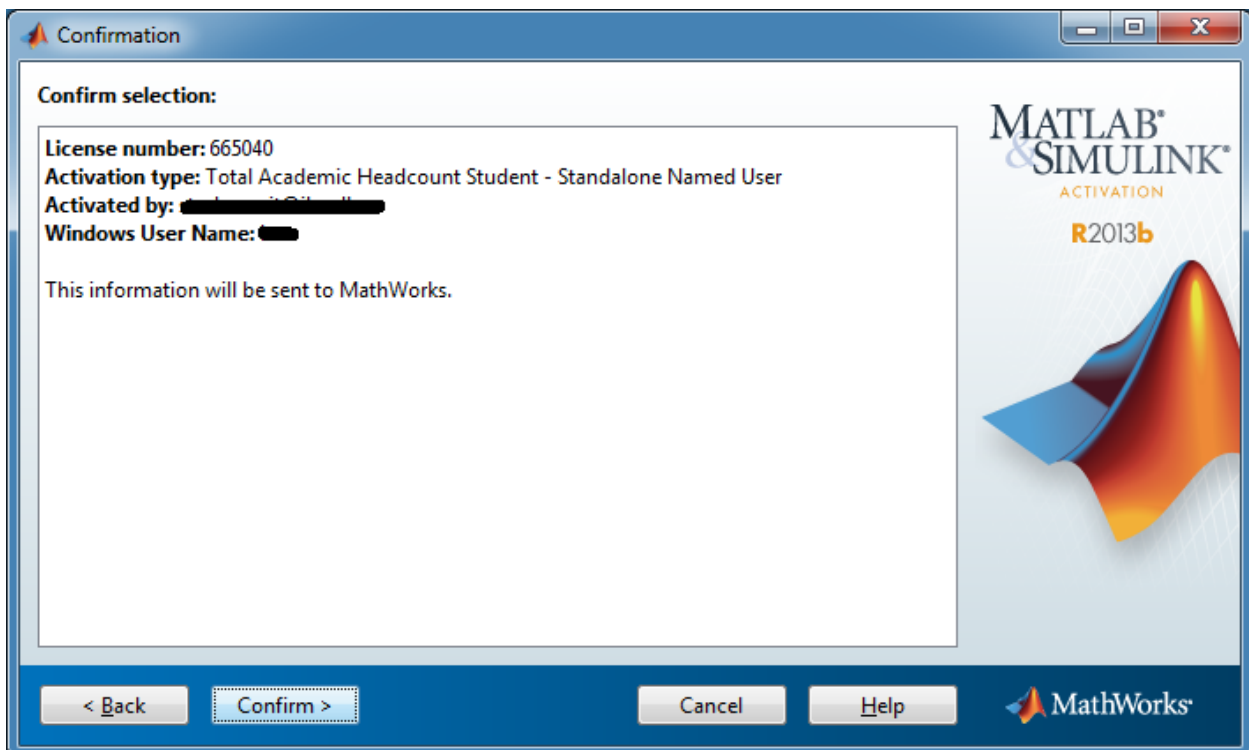
Type the Activation key (10136-51935-85225-06875-41200) and click Next:



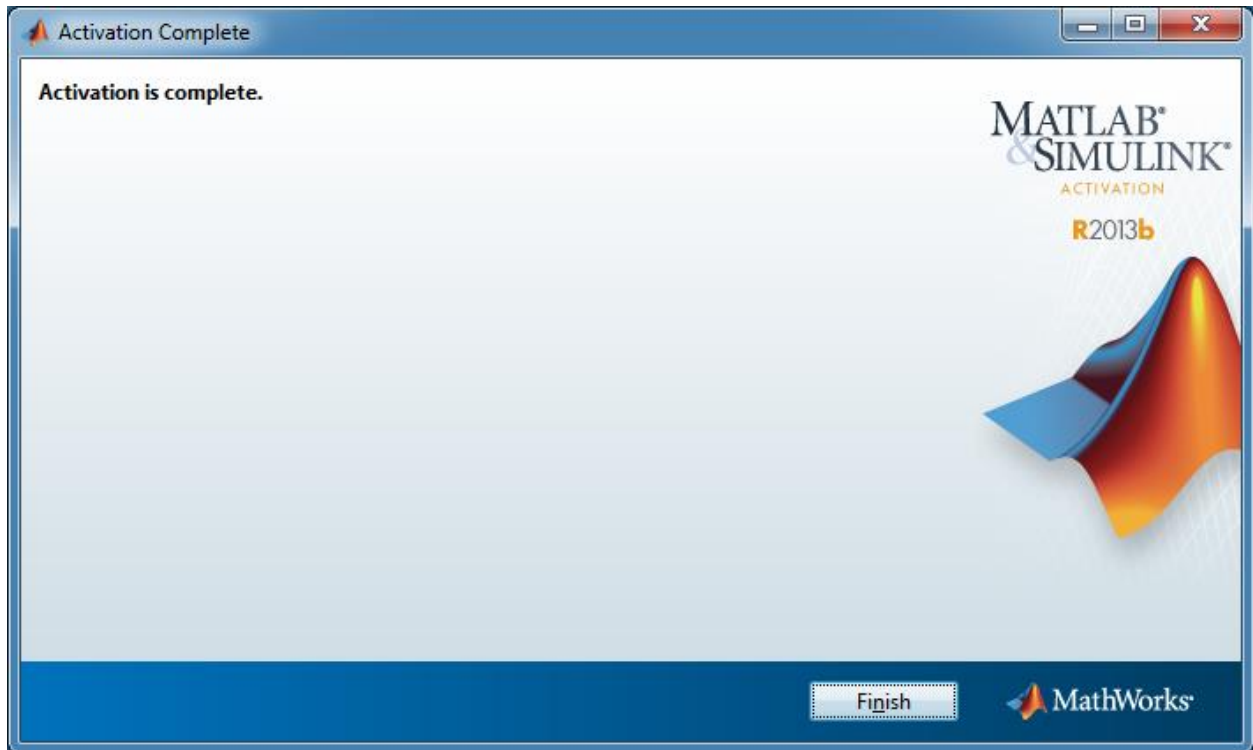
Do not change this field, click Next:



Click Confirm:



Click Finish:



Restart Matlab to complete the process.